

August 2015



Inside of the Prescott Valley Public Library

# Yavapai Library Network

# Monthly Report

## Manager's Lowdown

I would like to give my thanks to everyone for their patience throughout the implementation of our new networking security standards. I know that our new security policies have inconvenienced some of you and I greatly appreciate your understanding and patience. I would like to report that the new security methodology has been very successful. My thanks to Jared Phelan for implementing the new methodology and to Jim Lowman for doing a majority of the legwork in making sure we had the IP addresses for the membership. Chanel Wheeler also did a great job handling support issues related to the implementation.

Chanel has also been hard at work lining up training classes for the membership. The YLN used some of our BlueCloud Rewards issued by SirsiDynix last year to purchase a twelve training sessions. Because of the BlueCloud Rewards we are getting these training at very little cost to us. Here is the schedule for the upcoming training sessions:

Circulation Basics:  
Date: September 14, 1-4pm  
Location: PVPL in the PC Lab.

Cataloging Basics:  
Date: September 29, 1-4pm  
Location: YCP in Bldg 19, Rm 121.

Report Basics:  
Date: October 16, 10am - 2:30pm  
Location: TBD

Director's Station:  
Date: October 1, 9am - noon  
Location: TBD

Circulation: Intermediate:  
Date: October 13, 9am - 1:30pm  
Location: TBD

Circulation: Holds Maintenance & Reports:  
Date: October 27, 9am - noon  
Location: TBD

Circulation: Reports and Notices:  
Date: November 9, 9am - noon  
Location: TBD

Cataloging: Intermediate:  
Date: October 9, 9am - 1:30pm  
Location: TBD

Cataloging: Authority Control:  
Date: October 30, 9am - noon  
Location: TBD

Cataloging: Reports:  
Date: November 13, 9am - noon  
Location: TBD

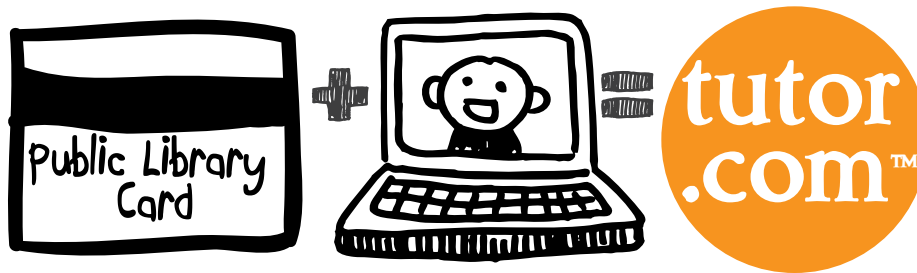
If you have not yet signed up for one of these classes I encourage you to do so. We will get another batch of classes next calendar year so if you miss your chance this year you will have to wait several months for another opportunity.

Respectfully Submitted,



Corey Christians  
Library Network Manager

# Monthly Infographic



# Prioritization

## Priority One: Resolve Current Helpdesk Requests

A help desk request, or work order, is the submission of a problem that one encounters during the normal operation of a YLN service. Requests are generally submitted via e-mail to help@yln.info. If a request is submitted via telephone, then a YLN staff person will create the request for the submitter. Help desk requests will always be our highest priority because in some cases a member library employee cannot complete a work function until the issue is resolved.

**Total requests submitted: 122**

**Total requests resolved: 121**

**Total unresolved requests opened this month: 1**

**Total requests still open: 49**

## Priority Two: Draft and RFP for a new Integrated Library System

The time is here to start looking into purchasing a new Integrated Library System (ILS). Stage one is sending out the RFP.

**Goal:** Create a request for proposal for a new integrated library system.

**Project Lead:** Corey Christians

### Progress:

- Install a wiki that can be used to gather information about what we want in a new ILS
- Test the wiki to make sure it works
- Send instructions out on how to use it
- Start having meetings to determine what we want in a new ILS
- Compile the results and add them to the wiki
- Form an RFP committee
- Survey the current ILS market
- Start work on the RFP
- Create a draft RFP
- Send the RFP out to the membership for comment
- Create the final draft
- Seek steering committee approval
- Distribute to all interested vendors

## Priority Three: Migrate vhosts from VMWare ESXi to Microsoft HyperV

Currently several servers are running virtually on a VMWare ESXi virtual host. Some of them include the YLN website, RPA, EZproxy, DNS, and many many more. The YLN will be switching to Microsoft HyperV in order to increase data redundancy and to increase support availability. The MIS Operations team also uses HyperV which will allow deep support with this product. This will require purchasing a new server, migrating current virtual servers and converting existing virtual hosts to HyperV.

- Determine if HyperV will work in our Linux/Windows environment
- Spec out a new server that can house all existing virtual servers as well as any future servers.
- Receive approval to purchase the new server
- Order new server
- Receive the new server
- Migrate existing ESXi virtual servers to HyperV
- Wipe ESXi servers and install HyperV
- Set up the new server to back up to the old servers

## Priority Four: Complete the LSTA SYNRG 2 Grant Process

The YLN in conjunction with the YCFLD received a grant to add the Mingus Union High School as a member of the Yavapai Library Network including converting their collection to Symphony, adding RFID capabilities, entering student information into Symphony and more. The conversion process was completed several months ago and final report needs to be submitted to complete the grant process.

**Goal:** Complete the SYNRG 2 LSTA Grant

**Project Lead:** Corey Christians

### Progress:

- Compile statistics required for the grant
- Complete the final narrative
- Verify all funds have been expended
- Send final certification to the State Library

Note concerning prioritization: The priority of projects may shift as individual portions are completed.

# Prioritization

## Priority Five: YLN Strategic Plan

While the YLN has been very good about technology planning, the overall vision and strategy of the YLN has been more elusive. The Executive Committee has been working on developing a vision, mission, and strategic plan.

**Goal:** Develop a strategic plan that will bring the YLN to the year 2025.

**Project Lead:** Corey Christians

### Progress:

- Create a way to implement the plan
- Get approval for the updated plan
- Change the bylaws if necessary
- Distribute the new plan

## Priority Six: Gather State Data Report Statistics

The public libraries have to submit a report containing statistical information requested by the Arizona State Library and Archives. The YLN provides some of the statistical information for the report to the membership to make sure information is consistently reported.

**Goal:** Gather the appropriate statistics and create a report detailing the information necessary for the Arizona State Library's data report.

**Project Lead:** Corey Christians

### Progress:

- Read through the current SDR instructions
- Note which statistical measures have changed
- Verify the instructions match the web input form.
- Gather statistical information
- Update instructions for member libraries in the YLN SDR report.
- Input updated information
- Verify updated information is correct
- Send out final copy to the YLN membership
- Answer any resulting questions.

## Priority Seven: SirsiDynix Supported Servers End-of-Life

After a certain amount of time vendors will no longer support hardware because it is considered outmoded. In other words parts become hard to find because they are no longer manufactured. Our servers will have this problem as of May 31st, 2016.

**Goal:** Have a solution in place to deal with outmoded hardware.

**Project Lead:** Corey Christians

### Progress:

- Determine differing solutions to the problem considering we may be on a new ILS in two years.
- Present the solutions to the Executive Committee
- Present the solutions to the Steering Committee
- Analyze which option is superior based on cost and stability
- Purchase any equipment that is required
- Migrate data and go into production

## Priority Eight: SirsiDynix Maintenance Bill

One of the annual events I have to complete is to make sure our SirsiDynix maintenance bill is accurate and to assist in getting it paid.

**Goal:** Make sure the SirsiDynix annual maintenance bill accurate and that it gets paid.

**Project Lead:** Corey Christians

### Progress:

- Receive a list of all items under maintenance from SirsiDynix
- Verify the items there are appropriate
- Verify the amounts being charged have not exceeded the amount agreed to in the contract
- Receive an updated list from SirsiDynix with all of my changes incorporated into it
- Verify my changes have been incorporated
- Have an invoice sent to YCFLD
- YCFLD Board approves payment

# Prioritization

## Priority Nine: Implement Blue Cloud Cataloging

Blue Cloud Cataloging will allow library staff to access Symphony cataloging from a web browser. The new product should have significant user interface improvements above the cataloging section in Work Flows.

**Goal:** Fully implement Blue Cloud Cataloging (BCC)

**Project Lead:** Chanel Wheeler

- Upgrade Web Services so we can use BCC
- Configure Web Services for the new service
- Test BCC to see how it works
- Create documentation
- Activate it for a test library to see how it works in a production environment
- Conduct a training session for all YLN users
- Activate it for the remaining libraries

## Priority Ten: Upgrade RPA

RPA is using an old version of Windows which will be no longer supported very soon. The current version of RPA is not supported to work on a newer version of Windows. Our RPA has also not received an update from SirsiDynix since we migrated to Symphony five years ago. SirsiDynix has committed to updating the product.

**Goal:** Get the new version of RPA working

**Project Leads:** Jim Lowman

- Obtain a new Windows server license
- Install a new virtual server for RPA
- Sign the NDA with SD so we can install RPA
- Have SD install the new version of RPA
- Test RPA to make sure it still works
- Add all the existing authentication resources
- Go Live with the new RPA
- Update any web links if necessary

## Completed Projects CY15

- Value of Services for YLN
- Add MUHS
- Complete overall strategic plan
- Upgrade CircIT NXT
- Create OPAC Enhancements
  - Make it so the UPC retrieves cover art
  - Make it so ICat1 displays item format
  - Make it so second UPC shows cover art
  - Make it so the book river shows cover art
  - Determine if online registration is feasible
  - Fix reserve item searching for YCV
  - Add icons for ICat1s that don't have them
  - Add (item) details button to search results
  - Add the ability to add local cover art
  - Always have location listings expand
- Move Servers to County Admin Building

## Cancelled/Postponed Projects CY15

- Install the Bookmyne Mobile App

# Statistics

| Holds - August 2015 |       |           |         |        |             |
|---------------------|-------|-----------|---------|--------|-------------|
| Pickup Library      | All   | CANCELLED | EXPIRED | FILLED | EXP_ONSHELF |
| All                 | 37058 | 3521      | 26      | 31280  | 2231        |
| AJS                 | 25    | 2         |         | 22     | 1           |
| ASH                 | 303   | 21        | 1       | 271    | 10          |
| BAG                 | 173   | 20        |         | 140    | 13          |
| BCC                 | 302   | 17        |         | 280    | 5           |
| BMHS                | 5     |           |         | 5      |             |
| CLA                 | 324   | 78        |         | 232    | 14          |
| CON                 | 442   | 32        |         | 391    | 19          |
| COR                 | 453   | 25        |         | 400    | 28          |
| CRK                 | 20    | 3         |         | 15     | 2           |
| CTW                 | 3972  | 394       | 4       | 3337   | 237         |
| CVHS                | 35    | 17        |         | 17     | 1           |
| CVPL                | 2050  | 129       | 3       | 1814   | 104         |
| CVUSD               | 25    |           |         | 24     | 1           |
| DHL                 | 433   | 44        |         | 379    | 10          |
| DIAL                | 3     |           |         | 3      |             |
| ERU                 | 182   | 11        | 2       | 154    | 15          |
| GMMS                | 8     | 2         |         | 6      |             |
| JER                 | 79    | 3         |         | 72     | 4           |
| LES                 | 3     |           |         | 3      |             |
| MAY                 | 421   | 30        | 1       | 334    | 56          |
| MES                 | 5     | 2         |         | 3      |             |
| MVS                 | 2     | 1         |         | 1      |             |
| ORME                | 19    |           |         | 19     |             |
| PCL                 | 73    | 1         |         | 68     | 4           |
| PCM                 | 16    | 1         |         | 15     |             |
| PHS                 | 51    | 2         |         | 47     | 2           |
| PMH                 | 30    | 3         |         | 27     |             |
| PPL                 | 11795 | 1157      | 7       | 9873   | 758         |
| PPLA                | 410   | 38        |         | 371    | 1           |
| PVA2                | 296   | 31        |         | 254    | 11          |
| PVPL                | 6988  | 671       | 1       | 5850   | 466         |
| SED                 | 3742  | 400       |         | 3111   | 231         |
| SEL                 | 426   | 12        | 1       | 369    | 44          |
| VBC                 | 336   | 33        |         | 293    | 10          |
| VER                 | 980   | 88        | 1       | 840    | 51          |
| VER2                | 1     | 1         |         |        |             |
| VOC                 | 1558  | 163       | 4       | 1333   | 58          |
| WIL                 | 62    | 5         |         | 43     | 14          |
| YAR                 | 459   | 18        |         | 424    | 17          |
| YCP                 | 390   | 42        | 1       | 312    | 35          |
| YCV                 | 147   | 20        |         | 119    | 8           |
| YFL                 | 14    | 4         |         | 9      | 1           |

# Statistics

| Items Transited - August 2015 |       |     |     |     |     |      |     |     |     |     |      |      |      |       |     |      |     |
|-------------------------------|-------|-----|-----|-----|-----|------|-----|-----|-----|-----|------|------|------|-------|-----|------|-----|
| Station Library →             |       |     |     |     |     |      |     |     |     |     |      |      |      |       |     |      |     |
| Item Library ↓                | All   | AJS | ASH | BAG | BCC | BMHS | CLA | CON | COR | CRK | CTW  | CVHS | CVPL | CVUSD | DHL | DIAL | ERU |
| All                           | 24000 | 31  | 241 | 118 | 224 | 6    | 178 | 373 | 416 | 14  | 2748 | 15   | 1709 | 22    | 369 | 3    | 149 |
| AJS                           | 1     |     |     |     |     |      |     |     |     |     |      |      |      |       |     |      |     |
| ASH                           | 341   |     |     | 2   | 2   |      | 2   | 9   | 7   | 2   | 46   |      | 15   |       | 6   | 1    | 2   |
| BAG                           | 283   |     | 2   |     | 1   |      |     | 4   | 8   |     | 40   |      | 23   |       | 8   |      | 2   |
| BCC                           | 337   |     | 6   | 1   |     |      | 2   | 4   | 5   |     | 40   | 1    | 30   | 1     | 6   |      | 1   |
| BMHS                          | 74    | 2   |     |     | 2   |      |     | 1   | 1   |     | 8    |      | 7    |       | 1   |      |     |
| CLA                           | 444   |     | 7   | 9   | 1   |      |     | 8   | 10  |     | 47   |      | 25   |       | 14  |      | 2   |
| CON                           | 104   |     |     |     | 1   |      |     |     | 2   |     | 12   |      | 5    |       |     |      | 2   |
| COR                           | 221   |     | 2   | 1   | 5   |      | 1   | 2   |     |     | 19   | 1    | 12   |       | 7   |      | 1   |
| CRK                           | 150   |     |     |     | 3   |      | 1   | 2   | 1   |     | 12   |      | 10   |       | 7   |      |     |
| CTW                           | 2635  | 4   | 19  | 15  | 28  |      | 17  | 37  | 42  |     |      | 3    | 185  | 7     | 32  |      | 16  |
| CVHS                          | 41    |     |     |     |     |      | 1   | 1   |     |     | 4    |      |      |       | 3   |      |     |
| CVPL                          | 992   | 2   | 11  | 5   | 12  |      | 8   | 17  | 22  |     | 113  | 1    |      |       | 19  |      | 5   |
| CVUSD                         | 134   |     | 1   |     | 1   |      | 3   | 2   | 1   |     | 11   |      | 22   |       | 1   |      |     |
| DHL                           | 235   |     | 2   | 1   | 8   |      | 3   | 10  | 5   |     | 28   |      | 21   | 1     |     |      | 1   |
| DIAL                          | 5     |     |     |     |     |      |     |     |     |     | 1    |      |      |       |     | 1    |     |
| ERU                           | 296   |     | 3   | 3   | 1   |      | 8   | 4   | 3   |     | 22   |      | 23   |       | 28  |      |     |
| GMMS                          | 34    |     |     |     |     |      |     |     |     |     | 4    |      | 4    |       | 1   |      |     |
| JER                           | 182   |     | 2   |     |     |      |     | 4   | 5   |     | 16   |      | 7    |       | 8   |      |     |
| LES                           | 74    | 2   |     |     |     |      |     |     | 1   |     | 10   |      | 9    |       |     |      |     |
| MAY                           | 261   | 2   | 1   |     | 3   |      | 3   | 2   | 6   |     | 40   |      | 20   |       | 4   |      | 2   |
| MES                           | 2     |     |     |     |     |      |     |     |     |     | 1    |      | 1    |       |     |      |     |
| MUHS                          | 4     |     |     |     |     |      |     |     |     |     |      |      |      |       |     |      |     |
| MVS                           | 3     |     |     |     |     |      |     |     |     |     |      |      |      |       |     |      |     |
| ORME                          | 53    |     | 1   | 1   | 1   |      |     | 2   | 1   |     | 7    |      | 1    |       | 3   |      |     |
| PCL                           | 324   |     | 1   |     | 2   |      | 2   | 2   | 4   |     | 31   |      | 12   |       | 1   | 1    | 3   |
| PHS                           | 89    |     | 1   | 1   | 1   | 1    |     | 1   | 2   |     | 5    |      | 12   |       | 1   |      | 2   |
| PMH                           | 28    |     |     |     | 1   |      |     |     |     |     | 3    |      | 5    |       |     |      | 1   |
| PPL                           | 5561  | 10  | 85  | 30  | 68  | 2    | 56  | 104 | 121 | 7   | 923  | 5    | 533  | 8     | 103 |      | 59  |
| PPLA                          | 0     |     |     |     |     |      |     |     |     |     |      |      |      |       |     |      |     |
| PVPL                          | 3109  | 1   | 33  | 15  | 36  | 3    | 21  | 51  | 65  | 1   | 404  | 1    | 309  | 5     | 52  |      | 13  |
| SED                           | 3791  | 1   | 31  | 7   | 19  |      | 23  | 39  | 29  | 1   | 416  | 1    | 167  |       | 20  |      | 15  |
| SEL                           | 408   |     | 7   | 1   | 4   |      |     | 14  | 9   | 1   | 38   |      | 24   |       | 4   | 1    | 1   |
| THS                           | 13    | 1   |     |     |     |      |     |     |     |     | 1    |      | 3    |       |     |      |     |
| UNDEFINED                     | 0     |     |     |     |     |      |     |     |     |     |      |      | 0    |       |     |      |     |
| VBC                           | 154   |     |     | 1   | 1   |      | 3   | 4   |     |     | 15   |      | 11   |       | 3   |      | 1   |
| VER                           | 802   |     | 2   | 3   | 4   |      | 6   | 12  | 19  | 1   | 106  | 1    | 72   |       | 11  |      | 1   |
| WIL                           | 142   |     | 2   | 1   | 1   |      |     |     | 5   |     | 19   |      | 10   |       | 1   |      | 1   |
| WTS                           | 6     | 5   |     |     |     |      |     |     |     |     |      |      |      |       |     |      |     |
| YAR                           | 354   | 1   | 6   | 1   | 3   |      | 3   | 16  | 11  |     | 47   |      | 13   |       | 3   |      | 2   |
| YCP                           | 1214  |     | 1   | 11  | 7   |      | 6   | 8   | 11  | 1   | 139  | 1    | 58   |       | 9   |      | 5   |
| YCV                           | 1097  |     | 15  | 9   | 8   |      | 9   | 13  | 20  |     | 120  |      | 59   |       | 12  |      | 11  |
| YFL                           | 1     |     |     |     |     |      |     |     |     |     |      |      | 1    |       |     |      |     |
| YLN                           | 1     |     |     |     |     |      |     |     |     |     |      |      |      |       |     |      |     |



# Statistics

| Items Transited - August 2015 |       |      |     |     |     |     |      |      |     |     |     |     |      |      |      |      |
|-------------------------------|-------|------|-----|-----|-----|-----|------|------|-----|-----|-----|-----|------|------|------|------|
| Station Library ->            |       |      |     |     |     |     |      |      |     |     |     |     |      |      |      |      |
| Item Library ↓                | All   | GMMS | JER | LES | MAY | MES | MUHS | ORME | PCL | PCM | PHS | PMH | PPL  | PPLA | PVA2 | PVPL |
| All                           | 24000 | 9    | 71  | 3   | 342 | 7   | 0    | 20   | 59  | 14  | 54  | 26  | 5857 | 349  | 18   | 4520 |
| AJS                           | 1     |      |     |     |     |     |      |      |     |     |     | 0   |      |      |      | 1    |
| ASH                           | 341   | 1    | 1   |     | 2   |     |      |      |     |     |     |     | 122  | 3    |      | 57   |
| BAG                           | 283   |      | 1   |     | 5   |     |      |      |     |     |     | 1   | 71   | 5    |      | 59   |
| BCC                           | 337   |      |     |     | 4   |     |      |      |     |     | 1   |     | 92   | 5    | 1    | 65   |
| BMHS                          | 74    |      | 1   |     |     |     |      |      | 1   |     |     | 1   | 27   |      |      | 11   |
| CLA                           | 444   |      | 2   |     | 8   |     |      |      |     |     | 1   |     | 104  | 9    |      | 102  |
| CON                           | 104   |      |     |     | 3   |     |      |      |     |     |     |     | 31   | 1    |      | 27   |
| COR                           | 221   |      | 1   |     | 5   |     |      | 1    |     |     | 1   |     | 72   | 2    |      | 47   |
| CRK                           | 150   |      | 1   |     | 1   |     |      |      |     |     |     |     | 55   | 4    |      | 26   |
| CTW                           | 2635  | 1    | 11  |     | 38  |     |      | 3    | 2   |     | 10  | 1   | 965  | 33   | 3    | 598  |
| CVHS                          | 41    |      |     |     |     |     |      |      |     |     |     |     | 11   | 1    |      | 10   |
| CVPL                          | 992   |      | 2   |     | 12  |     |      |      | 1   |     | 1   | 1   | 338  | 10   |      | 209  |
| CVUSD                         | 134   |      |     |     | 2   |     |      |      | 1   |     |     |     | 35   | 1    |      | 30   |
| DHL                           | 235   |      |     |     | 6   | 1   |      |      |     |     |     |     | 57   | 4    |      | 55   |
| DIAL                          | 5     |      |     |     |     |     |      |      |     |     |     |     | 1    |      |      | 1    |
| ERU                           | 296   |      |     |     | 1   |     |      | 1    | 4   |     |     |     | 82   | 1    |      | 51   |
| GMMS                          | 34    |      |     |     | 1   |     |      |      |     |     |     | 1   | 8    |      |      | 8    |
| JER                           | 182   |      |     |     | 2   |     |      |      |     |     | 1   |     | 57   | 1    |      | 27   |
| LES                           | 74    |      |     |     | 1   |     |      |      |     |     |     | 1   | 16   |      |      | 23   |
| MAY                           | 261   |      |     |     |     | 3   |      |      | 1   |     |     |     | 58   | 2    |      | 63   |
| MES                           | 2     |      |     |     |     |     |      |      |     |     |     |     | 0    |      |      |      |
| MUHS                          | 4     |      |     |     |     |     |      |      |     |     |     |     | 2    |      |      | 1    |
| MVS                           | 3     | 2    |     |     |     |     |      |      |     |     |     |     |      |      |      |      |
| ORME                          | 53    |      |     |     | 2   |     |      |      | 1   |     | 1   |     | 17   | 1    |      | 9    |
| PCL                           | 324   |      |     |     | 4   |     |      |      |     | 10  | 1   |     | 114  | 1    |      | 37   |
| PHS                           | 89    |      | 1   |     | 2   |     |      |      |     |     |     |     | 24   | 1    |      | 19   |
| PMH                           | 28    |      | 1   |     |     |     |      |      |     |     | 2   |     | 4    | 1    |      | 3    |
| PPL                           | 5561  | 3    | 18  | 2   | 91  |     |      | 1    | 16  |     | 20  | 7   |      | 128  | 4    | 1506 |
| PPLA                          | 0     |      |     |     |     |     |      |      |     |     |     |     | 0    |      |      |      |
| PVPL                          | 3109  | 1    | 6   |     | 64  |     |      | 5    | 7   |     | 4   | 7   | 1224 | 63   | 8    |      |
| SED                           | 3791  |      | 9   | 1   | 33  | 1   |      | 3    | 6   |     | 8   | 3   | 1050 | 31   | 1    | 619  |
| SEL                           | 408   |      | 2   |     | 6   |     |      |      |     |     |     | 1   | 115  | 6    |      | 101  |
| THS                           | 13    |      |     |     | 1   |     |      |      |     |     |     |     | 4    |      |      | 3    |
| UNDEFINED                     | 0     |      |     |     |     |     |      |      |     |     |     |     |      |      |      | 0    |
| VBC                           | 154   |      |     |     | 2   |     |      |      |     |     | 1   |     | 51   | 1    |      | 33   |
| VER                           | 802   | 1    |     |     | 11  |     |      |      | 1   |     |     |     | 235  | 7    | 1    | 174  |
| WIL                           | 142   |      |     |     | 2   | 1   |      |      |     |     |     |     | 38   |      |      | 26   |
| WTS                           | 6     | 0    |     |     |     |     |      |      |     |     |     |     |      |      |      |      |
| YAR                           | 354   |      | 1   |     | 5   |     |      |      | 1   |     |     | 2   | 103  | 7    |      | 55   |
| YCP                           | 1214  |      | 8   |     | 10  | 1   |      | 6    | 9   | 2   | 1   | 1   | 368  | 13   |      | 251  |
| YCV                           | 1097  |      | 5   |     | 18  |     |      |      | 7   | 2   |     |     | 306  | 7    |      | 213  |
| YFL                           | 1     |      |     |     |     |     |      |      |     |     |     |     | 0    |      |      |      |
| YLN                           | 1     |      |     |     |     |     |      |      | 1   |     |     |     |      |      |      |      |

# Statistics

| Items Transited - August 2015 |       |      |     |     |     |     |      |     |     |     |     |     |     |
|-------------------------------|-------|------|-----|-----|-----|-----|------|-----|-----|-----|-----|-----|-----|
| Station Library →             |       |      |     |     |     |     |      |     |     |     |     |     |     |
| Item Library ↓                | All   | SED  | SEL | THS | VBC | VER | VOC  | WIL | YAR | YCP | YCV | YFL | YLN |
| All                           | 24000 | 1939 | 280 | 2   | 307 | 793 | 1877 | 44  | 403 | 263 | 113 | 14  | 0   |
| AJS                           | 1     |      |     |     |     |     |      |     |     |     |     |     |     |
| ASH                           | 341   | 23   | 10  |     | 5   | 10  | 6    |     | 6   | 1   |     |     |     |
| BAG                           | 283   | 18   | 1   |     | 4   | 10  | 9    |     | 6   | 3   | 2   | 0   | 0   |
| BCC                           | 337   | 33   | 3   |     | 3   | 8   | 12   | 1   | 6   | 3   | 3   |     |     |
| BMHS                          | 74    | 5    |     |     | 4   | 2   |      |     |     |     |     |     | 0   |
| CLA                           | 444   | 36   | 5   |     | 12  | 13  | 13   |     | 7   | 5   | 4   |     |     |
| CON                           | 104   | 4    |     |     | 1   | 7   | 1    |     | 4   | 2   |     | 1   |     |
| COR                           | 221   | 11   | 2   |     | 4   | 9   | 7    |     | 6   | 1   | 1   |     | 0   |
| CRK                           | 150   | 9    | 2   |     | 2   | 2   | 3    |     | 4   | 1   | 2   | 2   |     |
| CTW                           | 2635  | 208  | 26  |     | 31  | 92  | 112  | 6   | 43  | 35  | 11  | 1   | 0   |
| CVHS                          | 41    | 7    |     |     |     |     | 3    |     |     |     |     |     |     |
| CVPL                          | 992   | 87   | 9   |     | 10  | 36  | 31   |     | 16  | 6   | 8   |     | 0   |
| CVUSD                         | 134   | 10   | 1   |     |     | 6   | 4    |     |     | 2   |     |     |     |
| DHL                           | 235   | 11   | 4   |     | 1   | 4   | 5    |     | 1   | 2   | 4   |     |     |
| DIAL                          | 5     |      |     |     |     |     |      |     | 1   |     |     |     |     |
| ERU                           | 296   | 30   | 1   |     | 1   | 8   | 14   | 1   | 3   | 2   | 1   |     | 0   |
| GMMS                          | 34    | 1    |     |     | 1   |     | 4    |     |     |     | 1   |     |     |
| JER                           | 182   | 18   | 1   |     | 3   | 13  | 11   |     | 3   | 1   | 1   | 1   |     |
| LES                           | 74    | 6    | 1   |     |     | 1   | 3    |     |     |     |     |     |     |
| MAY                           | 261   | 26   | 2   |     | 1   | 8   | 7    | 1   | 3   | 3   |     |     | 0   |
| MES                           | 2     |      |     |     |     |     |      |     |     |     |     |     | 0   |
| MUHS                          | 4     |      |     |     |     |     | 1    |     |     |     |     |     | 0   |
| MVS                           | 3     |      |     | 1   |     |     |      |     |     |     |     |     |     |
| ORME                          | 53    | 1    |     |     |     | 1   | 1    |     | 1   | 1   |     |     |     |
| PCL                           | 324   | 57   |     |     | 2   | 6   | 15   | 1   | 6   | 9   | 2   |     | 0   |
| PHS                           | 89    | 11   |     |     | 1   |     | 2    |     | 1   |     |     |     | 0   |
| PMH                           | 28    | 1    |     |     |     | 5   |      |     | 1   |     |     |     |     |
| PPL                           | 5561  | 648  | 111 |     | 78  | 245 | 319  | 16  | 131 | 70  | 32  | 1   | 0   |
| PPLA                          | 0     |      |     |     |     |     |      |     |     |     |     |     |     |
| PVPL                          | 3109  | 295  | 36  |     | 34  | 118 | 119  | 7   | 52  | 36  | 11  | 2   | 0   |
| SED                           | 3791  |      | 23  |     | 53  | 95  | 985  | 4   | 42  | 41  | 13  | 1   | 0   |
| SEL                           | 408   | 28   |     |     | 8   | 12  | 17   |     | 3   | 3   | 1   | 1   |     |
| THS                           | 13    |      |     |     |     |     |      |     |     |     |     |     |     |
| UNDEFINED                     | 0     |      |     |     |     |     |      |     |     |     |     |     |     |
| VBC                           | 154   | 4    | 4   |     |     | 7   | 6    |     | 2   | 2   | 1   | 1   |     |
| VER                           | 802   | 51   | 13  |     | 10  |     | 31   | 2   | 13  | 9   | 4   | 1   | 0   |
| WIL                           | 142   | 19   | 2   |     | 2   |     | 7    |     | 2   | 3   |     |     | 0   |
| WTS                           | 6     |      |     | 1   |     |     |      |     |     |     |     |     |     |
| YAR                           | 354   | 32   | 6   |     | 6   | 8   | 16   | 1   |     | 3   | 2   |     | 0   |
| YCP                           | 1214  | 142  | 6   |     | 12  | 37  | 62   | 2   | 16  |     | 9   | 1   | 0   |
| YCV                           | 1097  | 107  | 11  |     | 18  | 30  | 51   | 2   | 24  | 19  |     | 1   | 0   |
| YFL                           | 1     |      |     |     |     |     |      |     |     |     |     |     |     |
| YLN                           | 1     |      |     |     |     |     |      |     |     |     |     |     | 0   |

# Statistics

| Discards - August 2015 |                          |
|------------------------|--------------------------|
| Checkout Library       | Library Use Transactions |
| All                    | 5369                     |
| AJS                    | 147                      |
| ASH                    | 2                        |
| BAG                    | 4                        |
| BCC                    | 159                      |
| BMHS                   | 153                      |
| CON                    | 45                       |
| COR                    | 18                       |
| CRK                    | 29                       |
| CTW                    | 492                      |
| CVHS                   | 1                        |
| CVPL                   | 55                       |
| CVUSD                  | 2                        |
| DHL                    | 112                      |
| ERU                    | 3                        |
| GMMS                   | 826                      |
| JER                    | 5                        |
| LES                    | 22                       |
| MAY                    | 24                       |
| MES                    | 191                      |
| PCL                    | 6                        |
| PMH                    | 101                      |
| PPL                    | 833                      |
| PVPL                   | 435                      |
| SED                    | 222                      |
| SEL                    | 21                       |
| THS                    | 1335                     |
| VBC                    | 10                       |
| VER                    | 7                        |
| WIL                    | 41                       |
| YAR                    | 17                       |
| YCP                    | 30                       |
| YCV                    | 21                       |

| Items Added - August 2015 |              |
|---------------------------|--------------|
| Item Library              | Total Copies |
| All                       | 5651         |
| AJS                       | 71           |
| ASH                       | 42           |
| BAG                       | 108          |
| BCC                       | 192          |
| BMHS                      | 267          |
| CLA                       | 39           |
| CON                       | 27           |
| COR                       | 86           |
| CRK                       | 17           |
| CTW                       | 497          |
| CVHS                      | 222          |
| CVPL                      | 336          |
| CVUSD                     | 22           |
| DHL                       | 104          |
| DIAL                      | 17           |
| ERU                       | 37           |
| GMMS                      | 1            |
| JER                       | 50           |
| LES                       | 47           |
| MAY                       | 68           |
| MES                       | 315          |
| ORME                      | 105          |
| PCL                       | 81           |
| PMH                       | 49           |
| PPL                       | 965          |
| PVPL                      | 316          |
| SED                       | 665          |
| SEL                       | 78           |
| VBC                       | 19           |
| VER                       | 131          |
| WIL                       | 44           |
| YAR                       | 70           |
| YAV                       | 83           |
| YCP                       | 71           |
| YCV                       | 149          |
| YFL                       | 68           |
| YLN                       | 192          |

| Total Items - August 2015 |              |
|---------------------------|--------------|
| Item Library              | Total Copies |
| All                       | 1300551      |
| AJS                       | 18849        |
| ASH                       | 8393         |
| BAG                       | 11270        |
| BCC                       | 16088        |
| BMHS                      | 39648        |
| CLA                       | 9947         |
| CON                       | 8081         |
| COR                       | 9106         |
| CRK                       | 4419         |
| CTW                       | 109415       |
| CVHS                      | 19221        |
| CVPL                      | 54289        |
| CVUSD                     | 27608        |
| DHL                       | 7926         |
| DIAL                      | 1275         |
| ERU                       | 38502        |
| GMMS                      | 14677        |
| JER                       | 16157        |
| LES                       | 16980        |
| MAY                       | 12952        |
| MES                       | 9137         |
| MHS                       | 3810         |
| MUHS                      | 14476        |
| MVS                       | 4183         |
| ORME                      | 8228         |
| PCL                       | 35835        |
| PCT                       | 302          |
| PHS                       | 15089        |
| PMH                       | 11309        |
| PPL                       | 174319       |
| PPLA                      | 40           |
| PPLX                      | 176          |
| PVPL                      | 101100       |
| SED                       | 81964        |
| SEL                       | 9159         |
| SHM                       | 6387         |
| THS                       | 19718        |
| UNDEFINED                 | 1            |
| VBC                       | 10520        |
| VER                       | 30639        |
| VOC                       | 3            |
| WIL                       | 4878         |
| WTS                       | 4543         |
| YAR                       | 9697         |
| YAV                       | 15014        |
| YCC                       | 2254         |
| YCP                       | 75291        |
| YCV                       | 54663        |
| YFL                       | 323          |
| YLN                       | 152690       |

# Statistics

| New Users - August 2015 |         |
|-------------------------|---------|
| User Library            | Patrons |
| All                     | 3328    |
| AJS                     | 20      |
| ASH                     | 5       |
| BAG                     | 9       |
| BCC                     | 7       |
| BMHS                    | 74      |
| CLA                     | 10      |
| CON                     | 2       |
| COR                     | 11      |
| CRK                     | 0       |
| CTW                     | 195     |
| CVHS                    | 28      |
| CVPL                    | 79      |
| CVUSD                   | 68      |
| DHL                     | 7       |
| ERU                     | 725     |
| GMMS                    | 23      |
| JER                     | 8       |
| LES                     | 25      |
| MAY                     | 4       |
| MES                     | 14      |
| MHS                     | 9       |
| MUHS                    | 287     |
| ORME                    | 49      |
| PCL                     | 289     |
| PHS                     | 54      |
| PMH                     | 29      |
| PPL                     | 551     |
| PVPL                    | 372     |
| SED                     | 108     |
| SEL                     | 14      |
| THS                     | 20      |
| VBC                     | 85      |
| VER                     | 55      |
| VOC                     | 17      |
| WIL                     | 1       |
| YAR                     | 9       |
| YCP                     | 54      |
| YCV                     | 11      |

| Total Users - August 2015 |         |
|---------------------------|---------|
| User Library              | Patrons |
| All                       | 122958  |
| AJS                       | 763     |
| ASH                       | 965     |
| BAG                       | 740     |
| BCC                       | 1135    |
| BME                       | 2       |
| BMHS                      | 2555    |
| CHV2                      | 1       |
| CLA                       | 759     |
| CON                       | 758     |
| COR                       | 896     |
| CRK                       | 178     |
| CTW                       | 14938   |
| CVHS                      | 1153    |
| CVPL                      | 7632    |
| CVUSD                     | 1875    |
| DHL                       | 733     |
| DIAL                      | 24      |
| ERU                       | 3531    |
| GMMS                      | 781     |
| JER                       | 410     |
| LES                       | 435     |
| MAY                       | 1022    |
| MES                       | 658     |
| MHS                       | 282     |
| MUHS                      | 1652    |
| MVS                       | 1       |
| ORME                      | 158     |
| PCL                       | 2328    |
| PCM                       | 0       |
| PCT                       | 2       |
| PHS                       | 1992    |
| PMH                       | 950     |
| PPL                       | 27776   |
| PPLA                      | 14      |
| PPLG                      | 1       |
| PPLX                      | 2       |
| PVA2                      | 3       |
| PVPL                      | 22476   |
| SED                       | 10968   |
| SEL                       | 713     |
| SHM                       | 3       |
| TES                       | 1       |
| THS                       | 797     |
| VBC                       | 1062    |
| VER                       | 3788    |
| VER2                      | 1       |
| VOC                       | 1065    |
| WIL                       | 352     |
| WTS                       | 2       |
| YAR                       | 604     |
| YAV                       | 3       |
| YCC                       | 2       |
| YCP                       | 2645    |
| YCV                       | 1361    |
| YFL                       | 5       |
| YLN                       | 5       |

# Statistics

| Patron Bills - August 2015 |                 |                     |                 |                    |                               |                            |                           |
|----------------------------|-----------------|---------------------|-----------------|--------------------|-------------------------------|----------------------------|---------------------------|
| Bill Library               | Number of Bills | Total Amount Billed | Payment Amounts | Patrons with Bills | Delinquent Patrons with Bills | Blocked Patrons with Bills | Barred Patrons with Bills |
| All                        | 50262           | 449438.94           | 448099.16       | 10657              | 785                           | 1114                       | 565                       |
| AJS                        | 6               | 83.16               | 83.16           | 6                  | 2                             | 0                          | 0                         |
| ASH                        | 535             | 3249.66             | 3246.33         | 148                | 4                             | 3                          | 0                         |
| BAG                        | 43              | 530.79              | 530.79          | 26                 | 0                             | 4                          | 3                         |
| BCC                        | 81              | 1287.35             | 1287.35         | 26                 | 4                             | 4                          | 6                         |
| BME                        | 5               | 25                  | 25              | 1                  | 0                             | 0                          | 0                         |
| BMHS                       | 222             | 4414.68             | 4409.48         | 76                 | 0                             | 29                         | 0                         |
| CLA                        | 301             | 2123.69             | 2123.69         | 137                | 3                             | 2                          | 3                         |
| CON                        | 115             | 1363.49             | 1363.49         | 40                 | 4                             | 3                          | 3                         |
| COR                        | 114             | 1124.07             | 1124.07         | 44                 | 1                             | 3                          | 4                         |
| CRK                        | 14              | 173.6               | 173.6           | 7                  | 0                             | 0                          | 1                         |
| CTW                        | 12022           | 100589.89           | 100297.95       | 2432               | 137                           | 175                        | 234                       |
| CVHS                       | 74              | 5200.6              | 5183.65         | 25                 | 0                             | 5                          | 1                         |
| CVPL                       | 5309            | 29775.62            | 29733.84        | 1411               | 98                            | 316                        | 36                        |
| CVUSD                      | 76              | 693.27              | 693.27          | 33                 | 8                             | 2                          | 0                         |
| DHL                        | 10              | 103.4               | 103.4           | 4                  | 0                             | 1                          | 1                         |
| DIAL                       | 1               | 0.2                 | 0.2             | 1                  | 0                             | 0                          | 0                         |
| ERU                        | 168             | 2888.79             | 2888.79         | 77                 | 7                             | 9                          | 5                         |
| GMMS                       | 23              | 130.99              | 113.69          | 13                 | 0                             | 4                          | 0                         |
| JER                        | 220             | 1265.47             | 1265.47         | 79                 | 4                             | 9                          | 4                         |
| LES                        | 3               | 21.98               | 21.98           | 3                  | 1                             | 0                          | 0                         |
| MAY                        | 225             | 3362.16             | 3362.16         | 82                 | 3                             | 6                          | 5                         |
| MES                        | 12              | 104                 | 104             | 4                  | 1                             | 0                          | 0                         |
| MUHS                       | 1               | 0.6                 | 0.6             | 1                  | 0                             | 0                          | 0                         |
| MVS                        | 10              | 120.95              | 120.95          | 2                  | 0                             | 1                          | 0                         |
| ORME                       | 1               | 5.75                | 5.75            | 1                  | 0                             | 0                          | 0                         |
| PCL                        | 87              | 1093.99             | 1092.74         | 43                 | 2                             | 4                          | 2                         |
| PHS                        | 35              | 398.76              | 383.56          | 28                 | 1                             | 4                          | 5                         |
| PMH                        | 26              | 44.7                | 43.61           | 18                 | 0                             | 1                          | 0                         |
| PPL                        | 15253           | 192957.16           | 192436.5        | 2444               | 135                           | 284                        | 85                        |
| PPLA                       | 36              | 110.45              | 110.4           | 9                  | 1                             | 0                          | 0                         |
| PPLG                       | 291             | 1361.16             | 1361.16         | 70                 | 2                             | 9                          | 2                         |
| PVA2                       | 4               | 18                  | 18              | 2                  | 0                             | 0                          | 0                         |
| PVPL                       | 3661            | 12368.49            | 12171.33        | 906                | 110                           | 93                         | 64                        |
| SED                        | 5543            | 25440.4             | 25315.45        | 1464               | 201                           | 118                        | 26                        |
| SEL                        | 66              | 866.65              | 864.65          | 27                 | 1                             | 6                          | 0                         |
| THS                        | 4               | 49.94               | 49.94           | 4                  | 0                             | 0                          | 0                         |
| VBC                        | 58              | 359.8               | 359.8           | 24                 | 1                             | 4                          | 3                         |
| VER                        | 1614            | 13650.8             | 13619.19        | 362                | 49                            | 42                         | 30                        |
| VOC                        | 275             | 271.8               | 268.45          | 125                | 12                            | 3                          | 1                         |
| WIL                        | 24              | 169.09              | 169.09          | 16                 | 1                             | 3                          | 1                         |
| WTS                        | 2               | 10                  | 10              | 1                  | 0                             | 0                          | 0                         |
| YAR                        | 12              | 22.5                | 18.01           | 7                  | 3                             | 0                          | 0                         |
| YCP                        | 1444            | 15432.89            | 15409.46        | 411                | 14                            | 56                         | 49                        |
| YCV                        | 1581            | 6763.95             | 6749.4          | 547                | 18                            | 12                         | 54                        |
| YFL                        | 633             | 19133.36            | 19119.86        | 267                | 3                             | 17                         | 10                        |
| YLN                        | 22              | 275.89              | 265.9           | 20                 | 1                             | 4                          | 0                         |

# Statistics

Circulation by Library for August 2015

| Station Library | Checkout Item | Checkout Reserve | Reserve Renewals | Staff Renewals | Use Item | Library Use Transactions | Total Circulation | First and Renewal |
|-----------------|---------------|------------------|------------------|----------------|----------|--------------------------|-------------------|-------------------|
| All             | 155359        | 113              | 2                | 31045          | 4661     | 16301                    | 191180            | 186519            |
| AJS             | 2584          |                  |                  | 176            |          | 708                      | 2760              | 2760              |
| ASH             | 1244          |                  |                  | 126            |          | 67                       | 1370              | 1370              |
| BAG             | 586           |                  |                  | 87             |          | 70                       | 673               | 673               |
| BCC             | 1545          |                  |                  | 304            |          | 212                      | 1849              | 1849              |
| BMHS            | 1905          |                  |                  | 63             |          | 173                      | 1968              | 1968              |
| CLA             | 1011          |                  |                  | 166            |          | 9                        | 1177              | 1177              |
| CON             | 1056          |                  |                  | 228            |          | 60                       | 1284              | 1284              |
| COR             | 1530          |                  |                  | 146            |          | 30                       | 1676              | 1676              |
| CRK             | 146           |                  |                  | 66             |          | 43                       | 212               | 212               |
| CTW             | 16476         |                  |                  | 3334           | 694      | 1100                     | 20504             | 19810             |
| CVHS            | 881           |                  |                  | 4              |          | 276                      | 885               | 885               |
| CVPL            | 7520          |                  |                  | 1536           |          | 179                      | 9056              | 9056              |
| CVUSD           | 2958          |                  |                  | 213            |          | 9                        | 3171              | 3171              |
| DHL             | 891           |                  |                  | 107            |          | 180                      | 998               | 998               |
| DIAL            | 4             |                  |                  |                |          | 0                        | 4                 | 4                 |
| ERU             | 925           | 82               | 2                | 119            | 41       | 44                       | 1169              | 1128              |
| GMMS            | 964           |                  |                  | 0              | 87       | 863                      | 1051              | 964               |
| JER             | 371           |                  |                  | 72             |          | 57                       | 443               | 443               |
| LES             | 1464          |                  |                  | 0              | 433      | 61                       | 1897              | 1464              |
| MAY             | 1403          |                  |                  | 102            |          | 137                      | 1505              | 1505              |
| MES             | 233           |                  |                  | 5              |          | 194                      | 238               | 238               |
| MUHS            | 108           |                  |                  | 2              |          | 0                        | 110               | 110               |
| ORME            | 45            |                  |                  | 5              |          | 0                        | 50                | 50                |
| PCL             | 353           |                  |                  | 237            | 10       | 63                       | 600               | 590               |
| PCM             | 14            |                  |                  |                |          | 0                        | 14                | 14                |
| PHS             | 274           |                  |                  | 3              | 2        | 3                        | 279               | 277               |
| PMH             | 726           |                  |                  | 113            |          | 128                      | 839               | 839               |
| PPL             | 49324         |                  |                  | 11520          |          | 2342                     | 60844             | 60844             |
| PPLA            | 349           |                  |                  | 11             |          | 0                        | 360               | 360               |
| PVA2            | 18            |                  |                  | 1              | 1        | 14                       | 20                | 19                |
| PVPL            | 27011         |                  |                  | 6098           | 2333     | 2040                     | 35442             | 33109             |
| SED             | 16603         |                  |                  | 2850           | 490      | 1285                     | 19943             | 19453             |
| SEL             | 2027          |                  |                  | 58             |          | 42                       | 2085              | 2085              |
| THS             | 1093          |                  |                  | 0              | 128      | 1412                     | 1221              | 1093              |
| VBC             | 1780          |                  |                  | 123            |          | 56                       | 1903              | 1903              |
| VER             | 4705          |                  |                  | 809            |          | 127                      | 5514              | 5514              |
| VOC             | 1877          |                  |                  | 426            |          | 36                       | 2303              | 2303              |
| WIL             | 282           |                  |                  | 46             |          | 55                       | 328               | 328               |
| YAR             | 1498          |                  |                  | 229            |          | 91                       | 1727              | 1727              |
| YCP             | 989           | 31               |                  | 423            | 405      | 923                      | 1848              | 1443              |
| YCV             | 572           |                  |                  | 450            | 37       | 23                       | 1059              | 1022              |
| YFL             | 14            |                  |                  | 36             |          | 2                        | 50                | 50                |
| YLN             | 0             |                  |                  | 751            |          | 3187                     | 751               | 751               |

# Statistics

| Checkins - August 2015 |                |                                       |
|------------------------|----------------|---------------------------------------|
| Station Library        | Total Checkins | Change Vs. Previous Year FY July June |
| All                    | 159336         | -4%                                   |
| AJS                    | 1799           | -24%                                  |
| ASH                    | 1413           | 10%                                   |
| BAG                    | 839            | 21%                                   |
| BCC                    | 1494           | -6%                                   |
| BMHS                   | 598            | -20%                                  |
| CLA                    | 1111           | 40%                                   |
| CON                    | 1007           | -12%                                  |
| COR                    | 1613           | -8%                                   |
| CRK                    | 261            | -38%                                  |
| CTW                    | 17123          | 4%                                    |
| CVHS                   | 184            | 37%                                   |
| CVPL                   | 7838           | -9%                                   |
| CVUSD                  | 1793           | 170%                                  |
| DHL                    | 955            | -20%                                  |
| DIAL                   | 3              | -40%                                  |
| ERU                    | 910            | 40%                                   |
| GMMS                   | 399            | -19%                                  |
| JER                    | 487            | -5%                                   |
| LES                    | 1089           | 111%                                  |
| MAY                    | 1805           | -10%                                  |
| MES                    | 54             | -35%                                  |
| MUHS                   | 66             |                                       |
| MVS                    | 43             | -90%                                  |
| ORME                   | 37             | 42%                                   |
| PCL                    | 1306           | 64%                                   |
| PCM                    | 2              | 0%                                    |
| PCT                    |                | -100%                                 |
| PHS                    | 183            | 27%                                   |
| PMH                    | 253            | -38%                                  |
| PPL                    | 50489          | -4%                                   |
| PPLA                   | 1              | 0%                                    |
| PVA2                   | 4              |                                       |
| PVPL                   | 29040          | -10%                                  |
| SED                    | 16927          | -5%                                   |
| SEL                    | 2084           | -8%                                   |
| THS                    | 495            | -59%                                  |
| VBC                    | 1617           | -14%                                  |
| VER                    | 5578           | 27%                                   |
| VOC                    | 2474           | 0%                                    |
| WIL                    | 462            | -33%                                  |
| WTS                    | 144            | -78%                                  |
| YAR                    | 1614           | -21%                                  |
| YCP                    | 1801           | -28%                                  |
| YCV                    | 672            | -9%                                   |
| YFL                    | 79             | 25%                                   |
| YLN                    | 1190           | 663%                                  |

# Statistics

## OPAC Searches

| Library | Total  |
|---------|--------|
| AJS     | 54     |
| ASH     | 219    |
| BAG     | 273    |
| BCC     | 276    |
| CLA     | 312    |
| CON     | 452    |
| COR     | 817    |
| CRK     | 14     |
| CTW     | 38194  |
| CVHS    | 31     |
| CVPL    | 4101   |
| CVUSD   | 20     |
| DHL     | 331    |
| ERU     | 898    |
| GMMS    | 0      |
| JER     | 235    |
| LES     | 0      |
| MAY     | 311    |
| MES     | 0      |
| MUHS    | 0      |
| MVS     | 0      |
| ORME    | 40     |
| PCL     | 752    |
| PHS     | 81     |
| PMH     | 238    |
| PPL     | 72454  |
| PVPL    | 24072  |
| SED     | 53304  |
| SEL     | 270    |
| THS     | 6      |
| VBC     | 712    |
| VER     | 7240   |
| WIL     | 70     |
| WTS     | 0      |
| YAR     | 423    |
| YCP     | 9611   |
| DEFAULT | 11878  |
| Total   | 227689 |



# Statistics - Databases

## Ebrary

| Month of: 08/2015                  |              |              |               |                  |               |                     |                |           |
|------------------------------------|--------------|--------------|---------------|------------------|---------------|---------------------|----------------|-----------|
| Category: All Categories           |              |              |               |                  |               |                     |                |           |
| Usage Type: All Documents Selected |              |              |               |                  |               |                     |                |           |
| Library                            | Pages Viewed | Pages Copied | Pages Printed | Unique Documents | User Sessions | Chapter / Range DLs | Full Title DLs | Turnaways |
| PCL                                | 3146         | 22           | 527           | 134              | 242           | 0                   | 22             | 6         |
| PPL                                | 47           | 0            | 0             | 19               | 21            | 0                   | 14             | 0         |
| YCP                                | 2481         | 31           | 1474          | 106              | 176           | 0                   | 15             | 0         |
| YLN                                | 6533         | 168          | 1722          | 283              | 371           | 0                   | 87             | 0         |
| <b>TOTAL</b>                       | <b>12207</b> | <b>221</b>   | <b>3723</b>   | <b>542</b>       | <b>810</b>    | <b>0</b>            | <b>138</b>     | <b>6</b>  |

## Overdrive

| Month of: 8/2015                            |                  |                   |                  |                      |                   |                       |
|---|------------------|-------------------|------------------|----------------------|-------------------|-----------------------|
| Library Statistics - One Copy/One User      |                  |                   |                  |                      |                   |                       |
| Usage Type: All Documents Selected          |                  |                   |                  |                      |                   |                       |
| Format                                      | Advantage Titles | Consortium Titles | Advantage Copies | Adv. Preorder Copies | Consortium Copies | Cons. Preorder Copies |
| Audiobook                                   | 123              | 3,691             | 150              | 0                    | 3,973             | 0                     |
| eBook                                       | 268              | 5,265             | 402              | 0                    | 5,777             | 0                     |
| <b>Total</b>                                | <b>391</b>       | <b>8,956</b>      | <b>552</b>       | <b>0</b>             | <b>9,750</b>      | <b>0</b>              |
| Metered Access, Expiring Content            |                  |                   |                  |                      |                   |                       |
| Audiobook                                   | 1                | 7                 | 1                | 0                    | 7                 | 0                     |
| eBook                                       | 39               | 798               | 54               | 0                    | 1,079             | 0                     |
| <b>Total</b>                                | <b>40</b>        | <b>805</b>        | <b>55</b>        | <b>0</b>             | <b>1,086</b>      | <b>0</b>              |
| Metered Access, Licensed Content            |                  |                   |                  |                      |                   |                       |
| eBook                                       | 66               | 747               | 2,964            | 0                    | 29,458            | 0                     |
| User Activity                               |                  |                   |                  |                      |                   |                       |
| Unique Users with titles checked out: 2,311 |                  |                   |                  |                      |                   |                       |
| Checkouts                                   |                  |                   | Holds            |                      |                   |                       |
| Audiobook                                   | 3,806            |                   | Audiobook        |                      | 1,038             |                       |
| eBook                                       | 7,156            |                   | eBook            |                      | 2,399             |                       |
| <b>Total</b>                                | <b>10,962</b>    |                   | <b>Total</b>     |                      | <b>3,437</b>      |                       |

## Tutor.com

| Month | 1-to-1 sessions |        |       | Type        |    |          |          |      |          |                |             | Time  |            | SkillsCenter |        |       |
|-------|-----------------|--------|-------|-------------|----|----------|----------|------|----------|----------------|-------------|-------|------------|--------------|--------|-------|
|       | Reg             | Mobile | Total | 24/7 Resume | AP | Eng-lish | Job Help | Math | Sci-ence | Social Studies | Write Tutor | Hours | Avg. (min) | Regular      | Mobile | Total |
| Aug.  | 29              | 6      | 35    | 0           | 0  | 7        | 0        | 15   | 4        | 2              | 1           | 14.24 | 29.45      | 2            | 0      | 2     |

## UniversalClass

| Month | New Registered Users | Login Sessions | New Courses Enrolled | Stud. Submissions |
|-------|----------------------|----------------|----------------------|-------------------|
| Aug.  | 11                   | 305            | 21                   | 255               |

## Zinio

| Month | Checkouts | Turnaways |
|-------|-----------|-----------|
| Aug.  | 3335      | 0         |

## Statistics - I-Tiva (TM3)

| Date                | Messages Imported | Messages Rejected | Calls Made  | Number of Deliveries | Patron Logins on MESSAGE call |
|---------------------|-------------------|-------------------|-------------|----------------------|-------------------------------|
| 8/1/2015            | 147               | 9                 | 179         | 135                  |                               |
| 8/2/2015            | 70                | 4                 | 70          | 64                   |                               |
| 8/3/2015            | 21                | 11                | 31          | 18                   |                               |
| 8/4/2015            | 135               | 8                 | 180         | 116                  |                               |
| 8/5/2015            | 158               | 2                 | 206         | 142                  |                               |
| 8/6/2015            | 157               | 17                | 196         | 146                  |                               |
| 8/7/2015            | 116               | 4                 | 144         | 109                  |                               |
| 8/8/2015            | 136               | 5                 | 165         | 130                  |                               |
| 8/9/2015            | 75                |                   | 75          | 70                   |                               |
| 8/10/2015           | 35                | 2                 | 46          | 30                   |                               |
| 8/11/2015           | 77                | 3                 | 93          | 75                   |                               |
| 8/12/2015           | 187               | 16                | 230         | 176                  |                               |
| 8/13/2015           | 150               | 1                 | 189         | 138                  |                               |
| 8/14/2015           | 124               | 2                 | 161         | 112                  |                               |
| 8/15/2015           | 139               | 4                 | 173         | 125                  |                               |
| 8/16/2015           | 62                |                   | 62          | 51                   |                               |
| 8/17/2015           | 50                | 2                 | 61          | 47                   |                               |
| 8/18/2015           | 127               | 4                 | 166         | 117                  |                               |
| 8/19/2015           | 150               | 2                 | 185         | 138                  |                               |
| 8/20/2015           | 165               | 3                 | 208         | 150                  |                               |
| 8/21/2015           | 145               | 3                 | 196         | 125                  |                               |
| 8/22/2015           | 122               | 1                 | 131         | 120                  |                               |
| 8/23/2015           | 88                | 1                 | 88          | 70                   |                               |
| 8/24/2015           | 45                |                   | 66          | 36                   |                               |
| 8/25/2015           | 127               | 3                 | 164         | 108                  |                               |
| 8/26/2015           | 160               | 1                 | 218         | 135                  |                               |
| 8/27/2015           | 163               | 7                 | 203         | 151                  |                               |
| 8/28/2015           | 121               | 9                 | 153         | 109                  |                               |
| 8/29/2015           | 144               | 5                 | 172         | 134                  |                               |
| 8/30/2015           | 82                | 2                 | 82          | 68                   |                               |
| 8/31/2015           | 28                |                   | 37          | 24                   |                               |
| <b>Grand Total:</b> | <b>3506</b>       | <b>131</b>        | <b>4330</b> | <b>3169</b>          |                               |

I-Tiva Month To Date MESSAGE Report used